



Lowood Place, Wilmslow

Wilmslow, SK9 6GN

£12,000 Per Month

- Five bedroom, three with en-suites
- High specification
- Garage
- Recently built
- Principal suite with dressing area & ensuite
- Open-plan Kitchen
- Modern design
- Landscaped grounds
- Surrounded by 60 acre green belt land
- Furnished

PROPERTY SUMMARY

Lowood Place in Wilmslow is an exclusive development of only 14 detached homes, it is surrounded by 60 acres of green belt bringing you close to nature.

'The Willow' design provides over 3000 sqft of living accommodation, consisting of five bedrooms, four bathrooms, three of which are en-suites. The principal has a beautiful dressing room and en-suite too.

This detached property features an open-plan kitchen/living and dining space with an integrated double garage.

Lowood is conveniently located 2.0 miles from Wilmslow train station.

Please also note these photos are of the show-property and are used for a reference only, furnishings will vary.

5



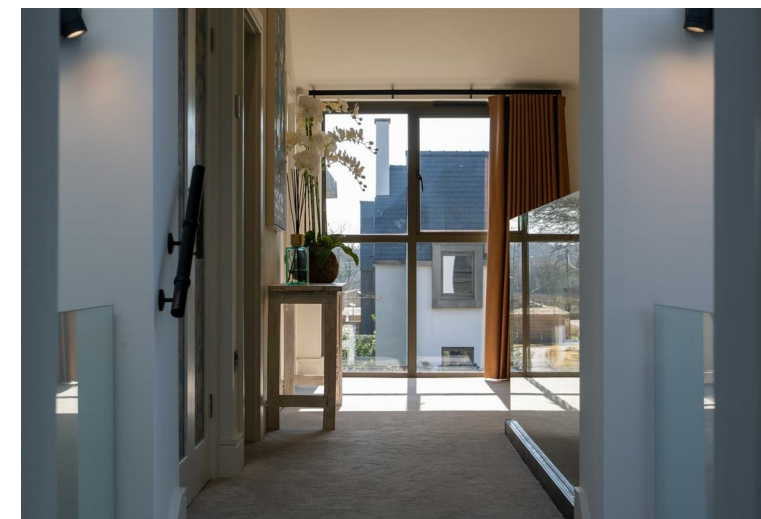
4

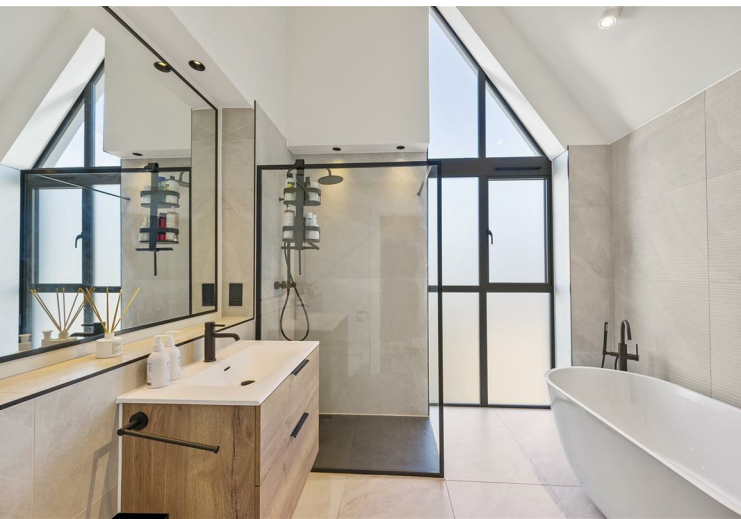


4













Council Tax Band:
Tax Band G

Tenure:

Local Authority:
Cheshire East

Energy Efficiency Rating		
	Current	Potential
Very energy efficient - lower running costs		
(92 plus) A		
(81-91) B	82	86
(69-80) C		
(55-68) D		
(39-54) E		
(21-38) F		
(1-20) G		
Not energy efficient - higher running costs		
England & Wales	EU Directive 2002/91/EC	

Agents Note: Whilst every care has been taken to prepare these sales particulars, they are for guidance purposes only. All measurements are approximate and whilst every care is for general guidance purposes only and whilst every care has been taken to ensure their accuracy, they should not be relied upon and potential buyers are advised to recheck the measurements.



Cheshire Office:
Blackbox
Beech Lane
Wilmslow
Cheshire SK9 5ER

Email:
sales@benzonbunch.co.uk

Telephone:
01625 523605

Website:
<https://www.bensonbunch.co.uk>